

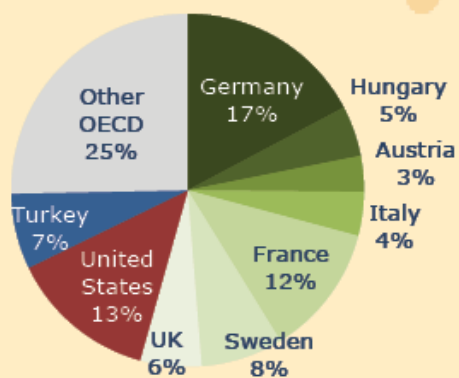
Migration



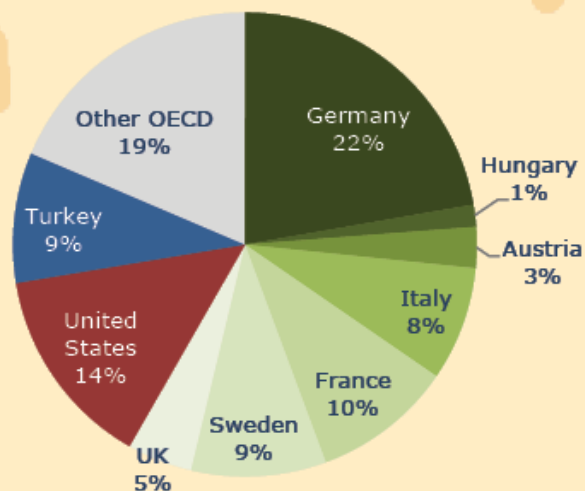
ASYLUM SEEKERS INTO OECD COUNTRIES

Evolution of total and share of destination countries

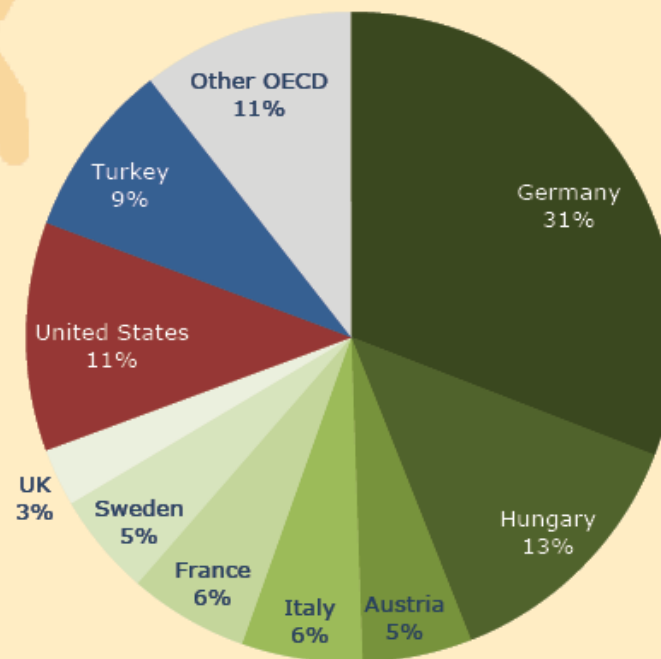
1ST SEMESTER 2013
OECD TOTAL = 250,000



1ST SEMESTER 2014
OECD TOTAL = 300,000



1ST SEMESTER 2015
OECD TOTAL = 500,000



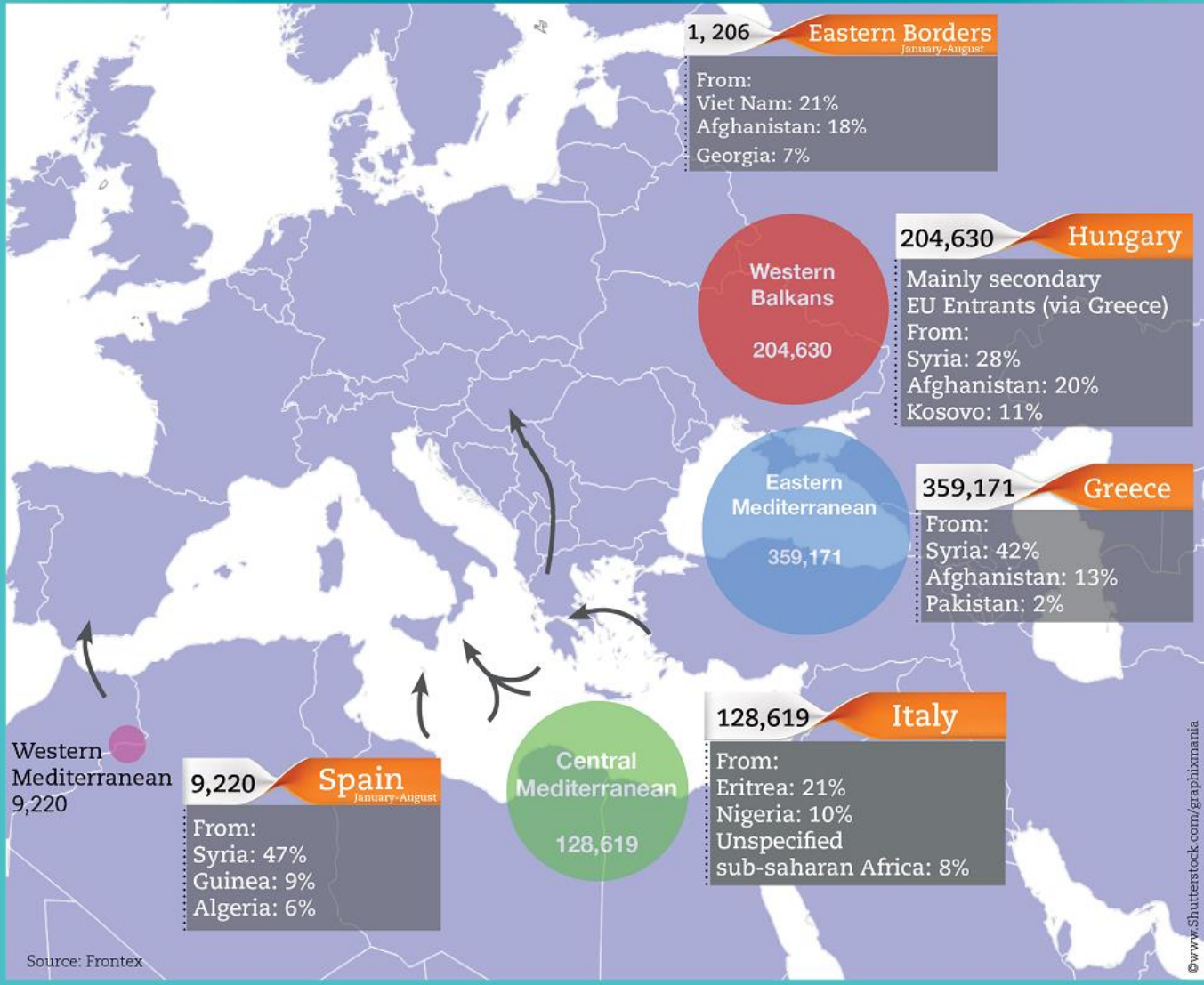
Source: UNHCR

Illustration: Shutterstock

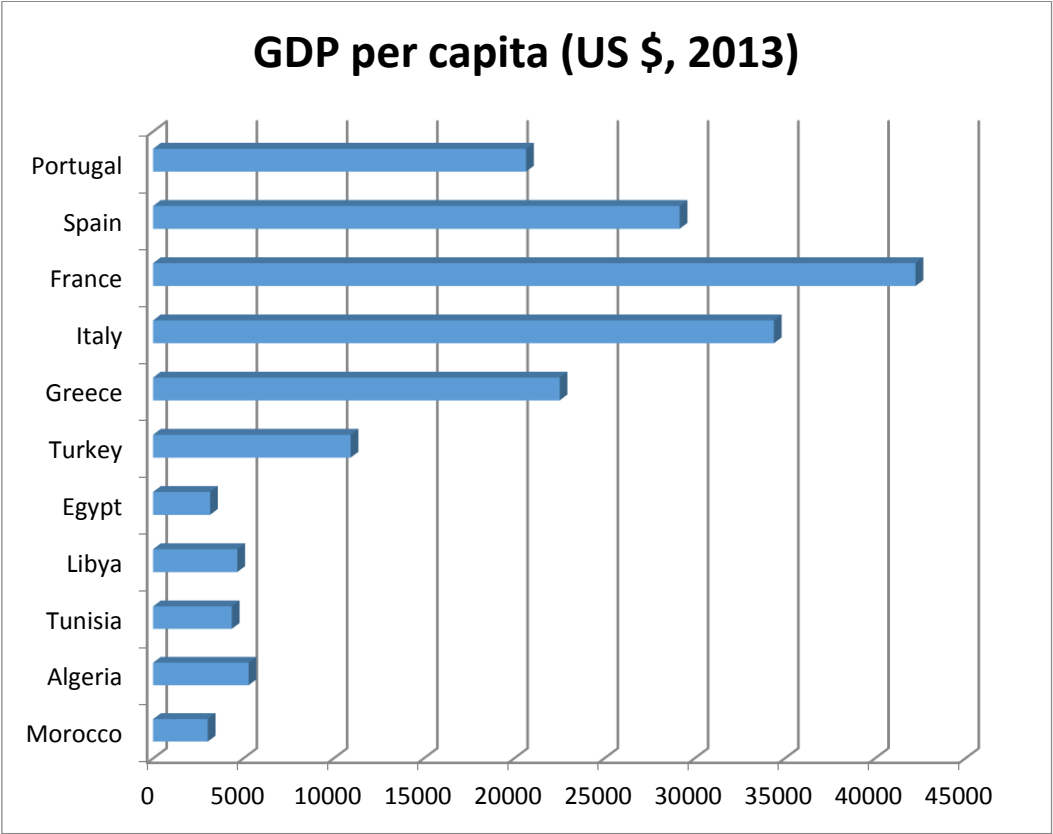


MAIN ENTRY ROUTES FOR ILLEGAL BORDER CROSSING INTO THE EU

January - September 2015

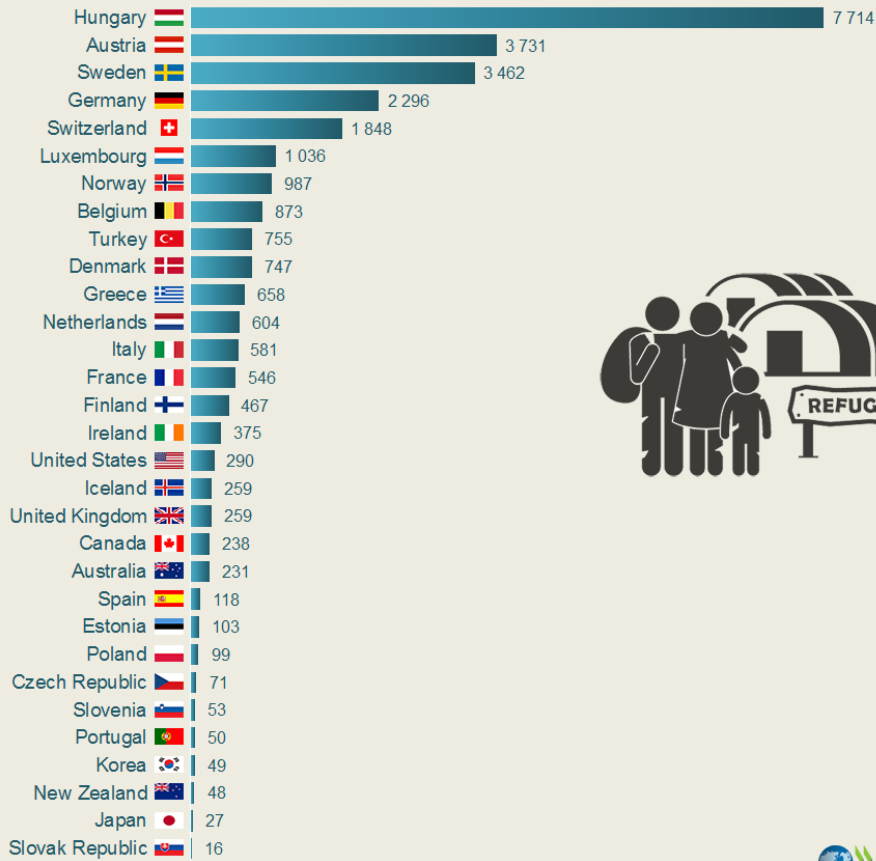


Income Gap around the Mediterranean



Looking for shelter

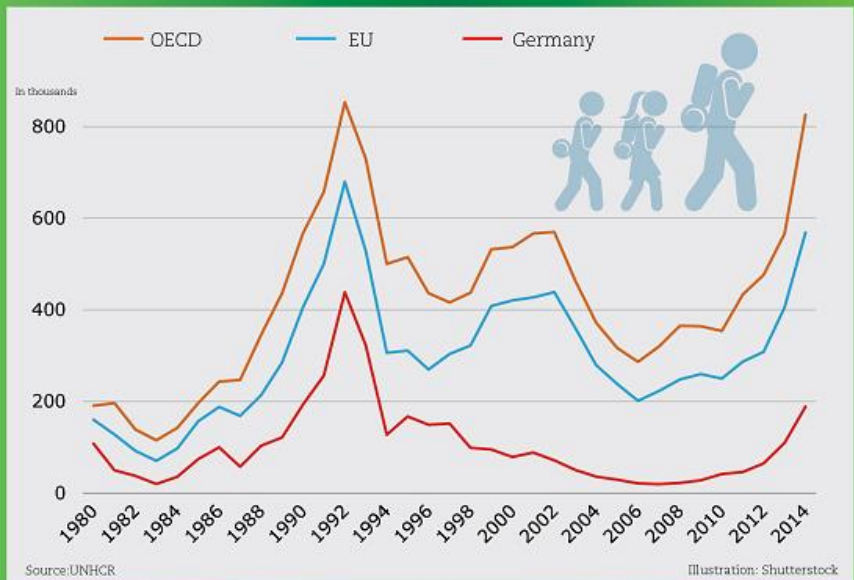
Asylum seekers per million population, by country of destination (January-July 2015)



Source: UNHCR | Illustration: Shutterstock

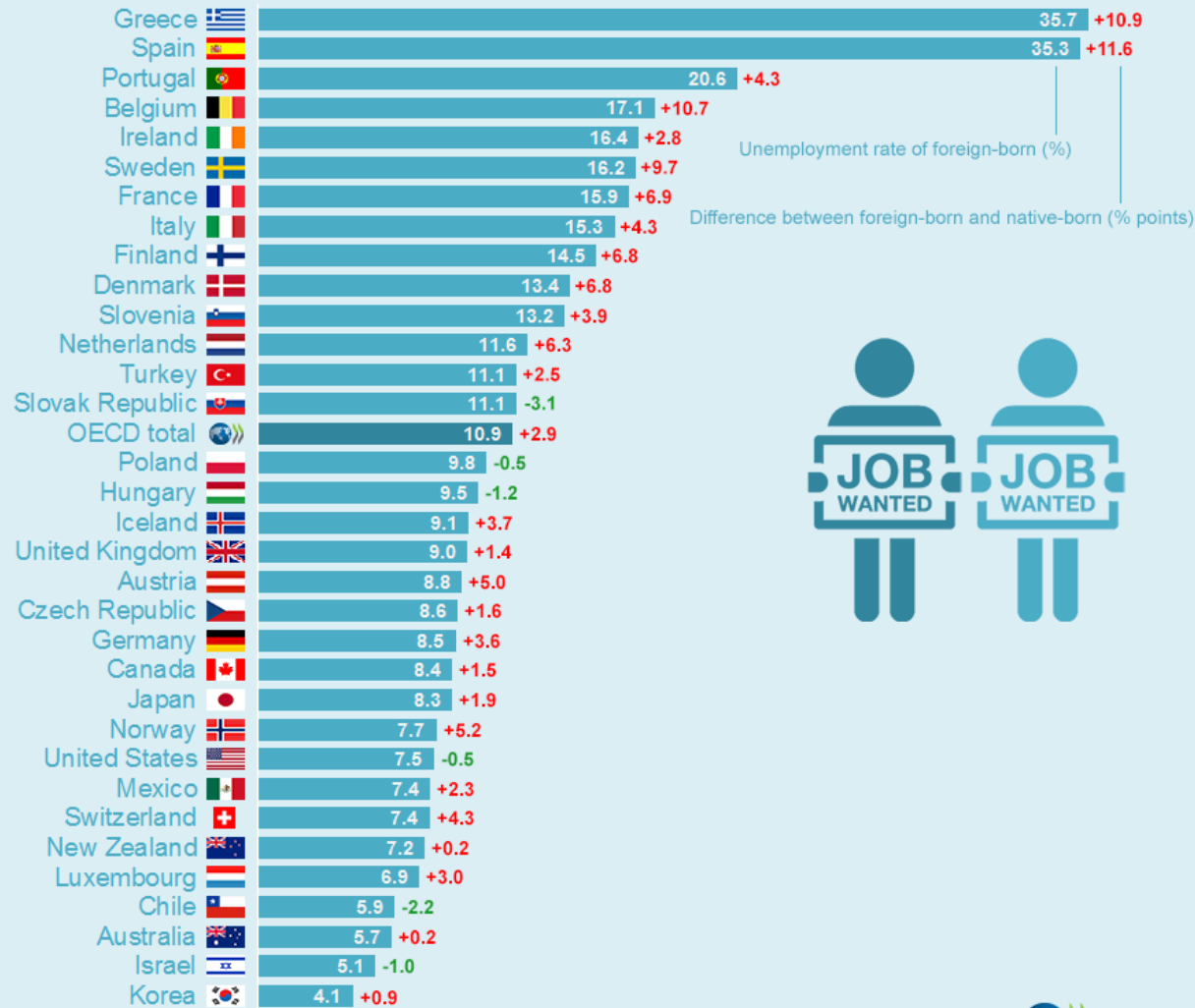


ASYLUM SEEKING HITTING NEW HEIGHTS IN 2015



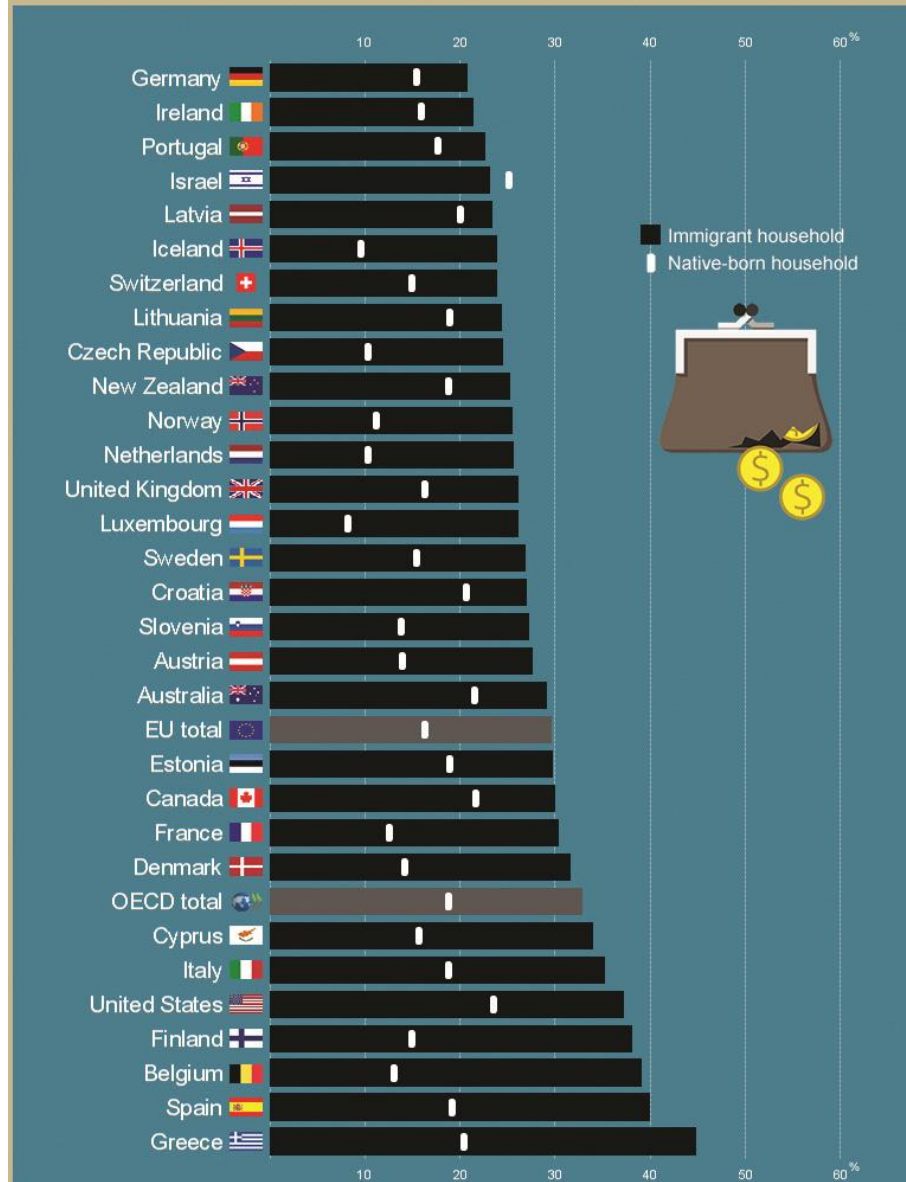
Jobless immigrants?

Unemployment rates of foreign-born compared to native-born (2012-13)



Migration and poverty

Relative poverty rates* by household immigrant status (2012)



*% of persons living below the poverty threshold, here defined as 60% of a country's median income.
 Source: Indicators of Immigrant Integration 2015: Settling In (OECD/EU) | Picture: Shutterstock

Foreign-born population Total, % of population, 2013

Source: International migration database

